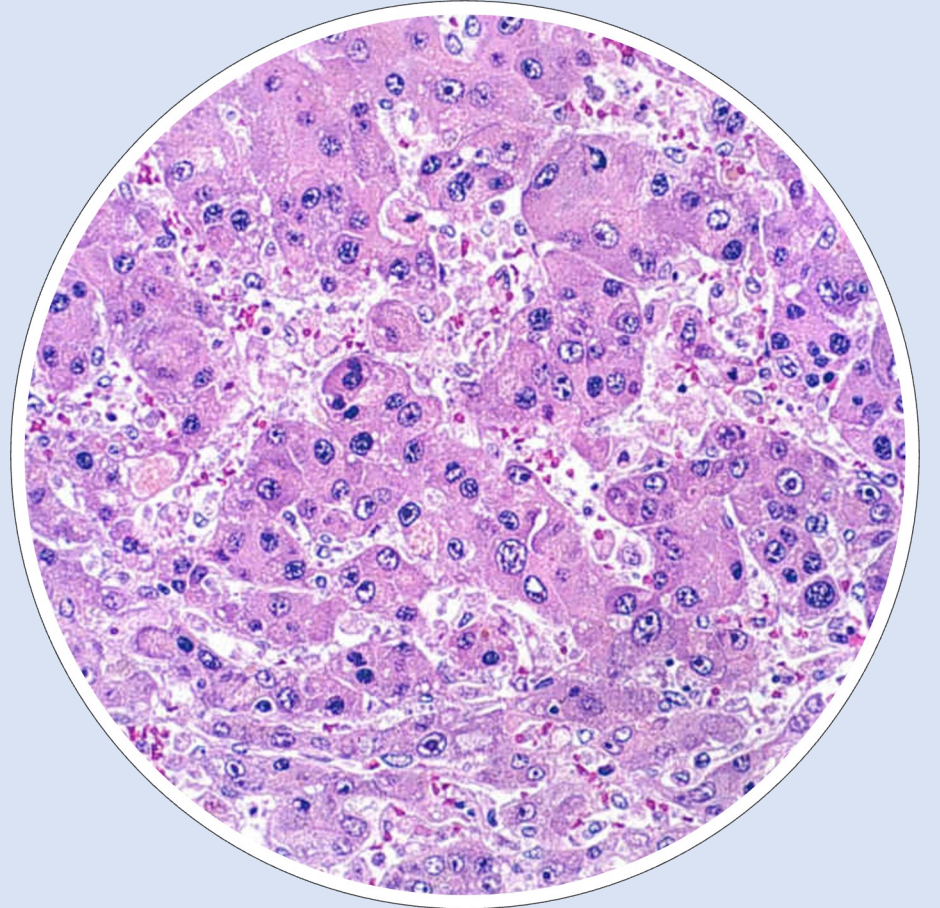
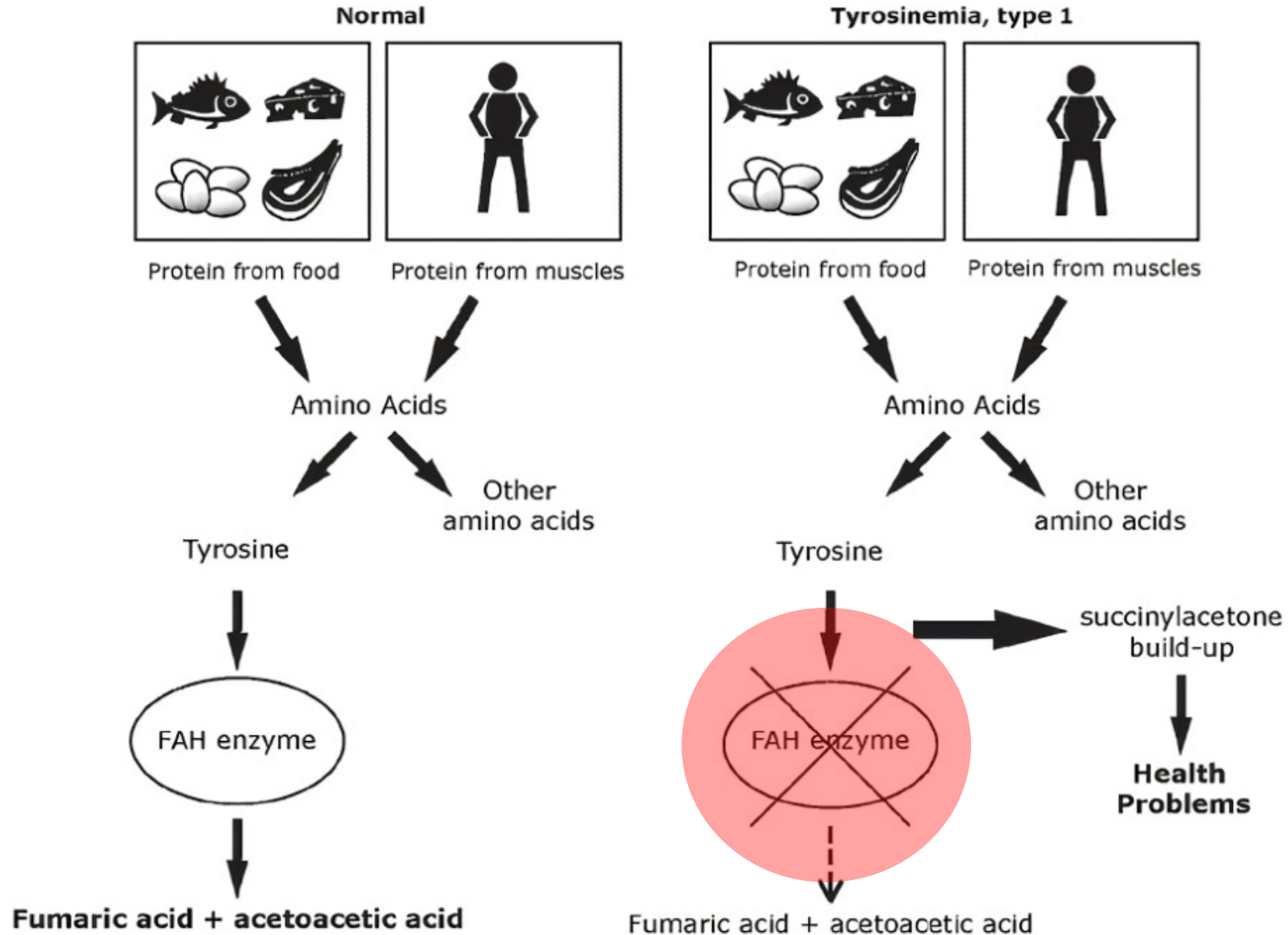
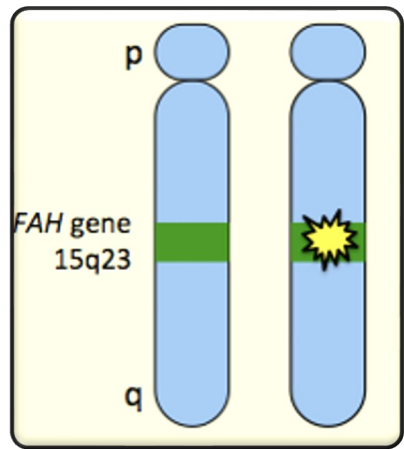


Tyrosinemia Type 1

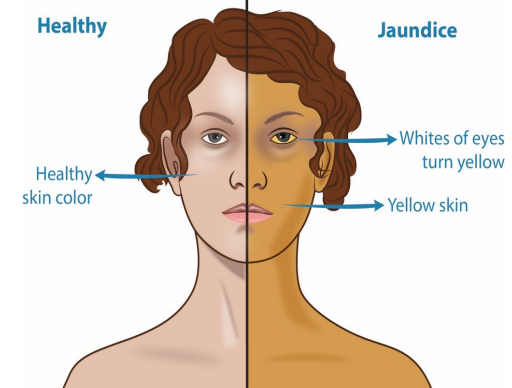
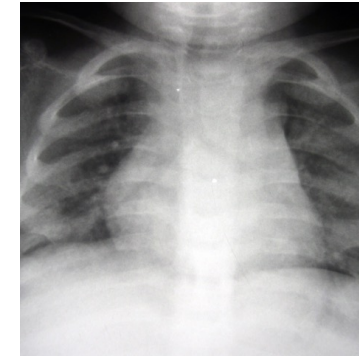
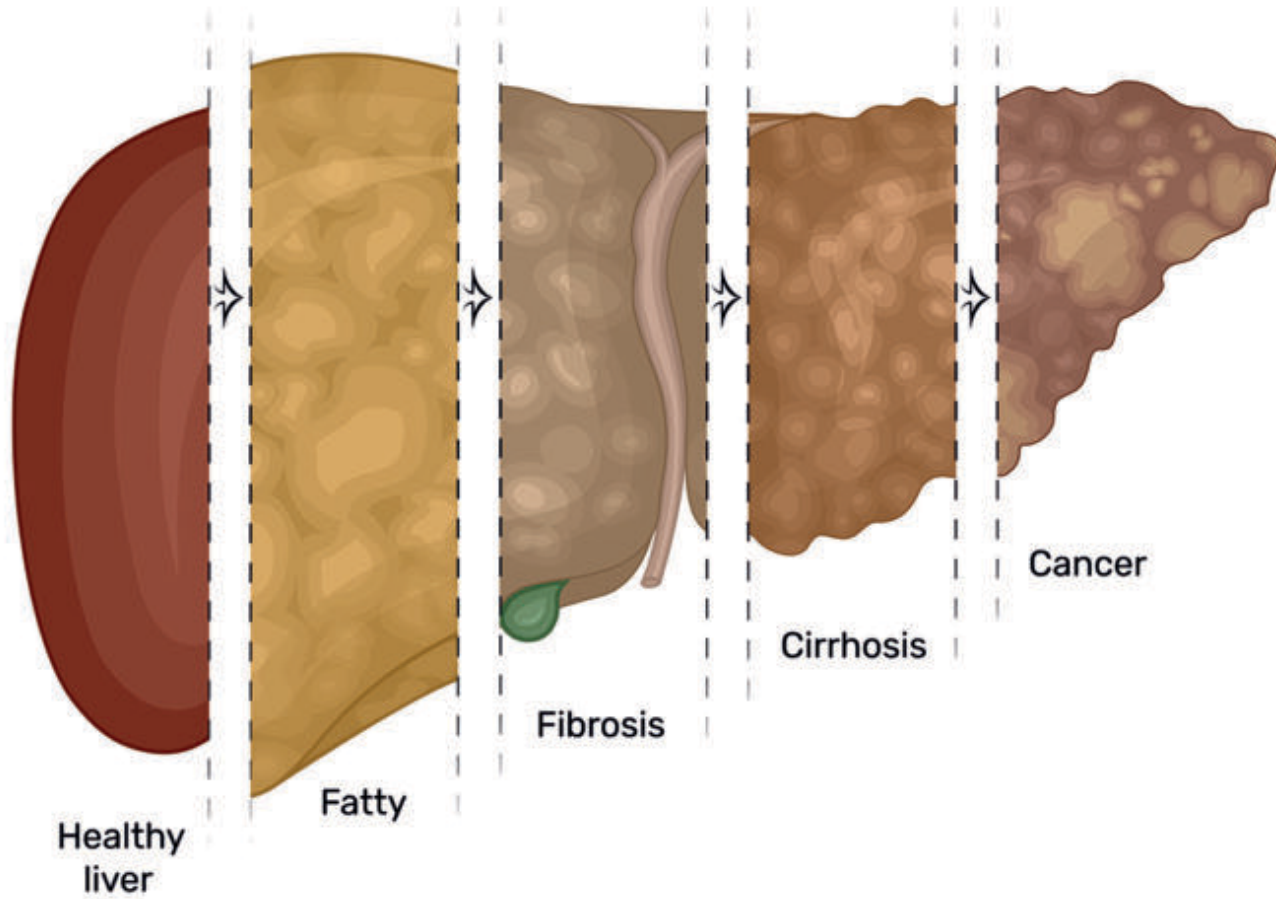
Brooke Fuerstenau



What is Tyrosinemia Type 1?

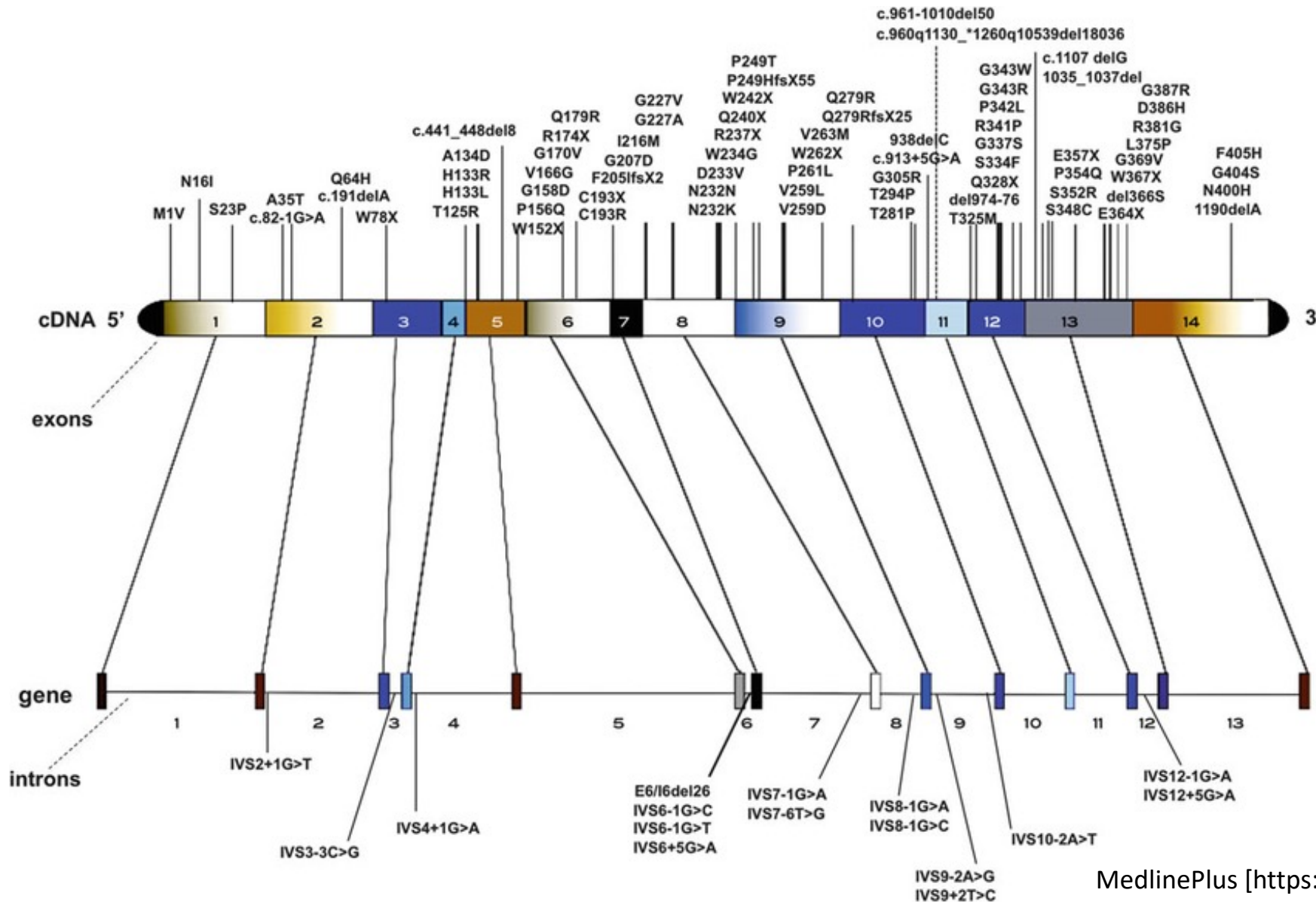


Symptoms and Signs



Pain Assist.com

What is the **FAH** gene?



- Encodes for the enzyme **fumarylacetoacetase hydrolase**
- Enzyme found in **liver** and **kidneys**
- Enzyme used to break down **tyrosine** (amino acid)

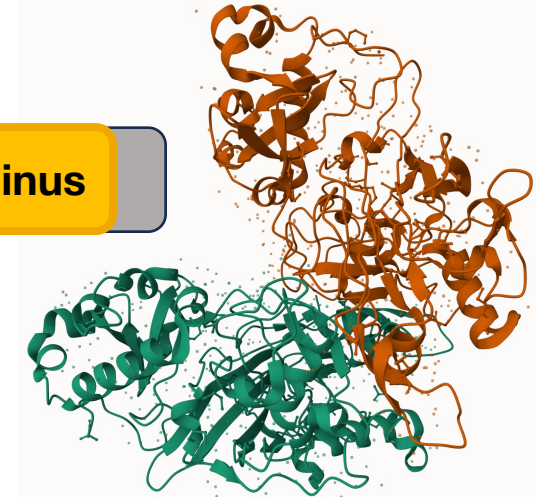
What does **fumarylacetoacetase hydrolase** do?



Human

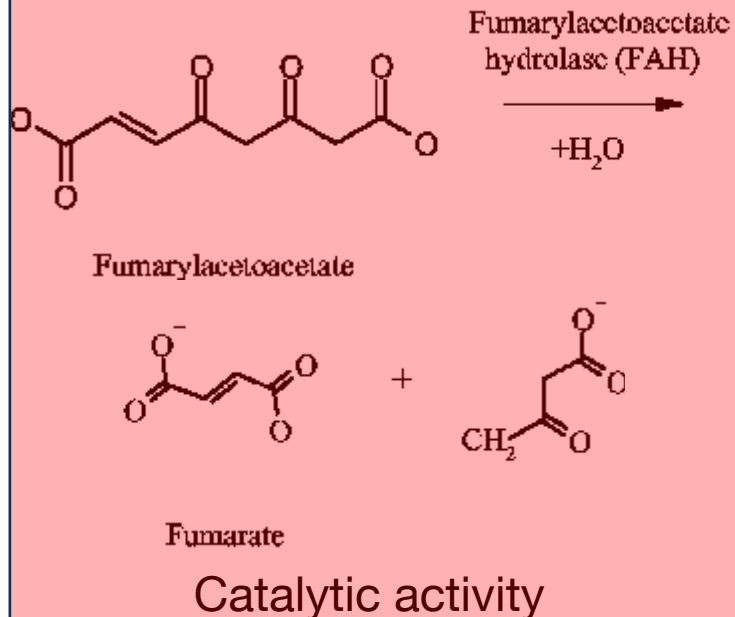
FAA Hydrolase N-terminus

FAA Hydrolase C-terminus

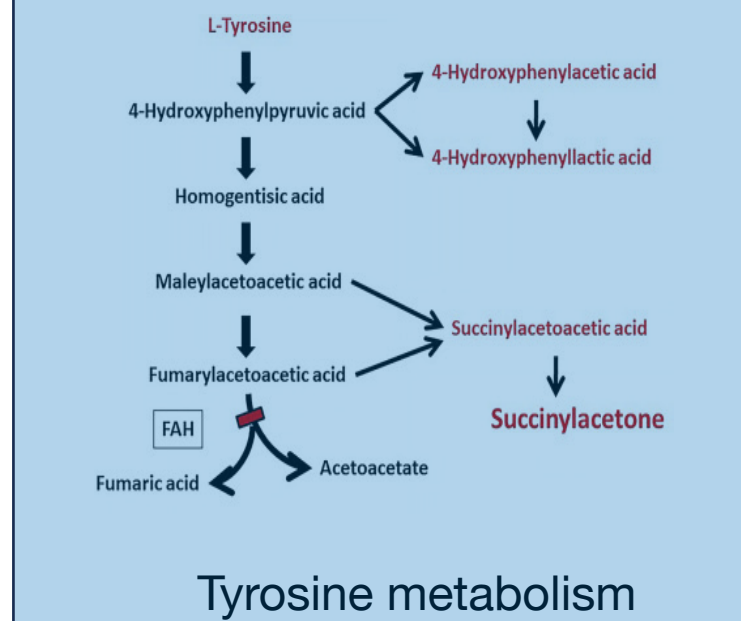


Gene Ontology

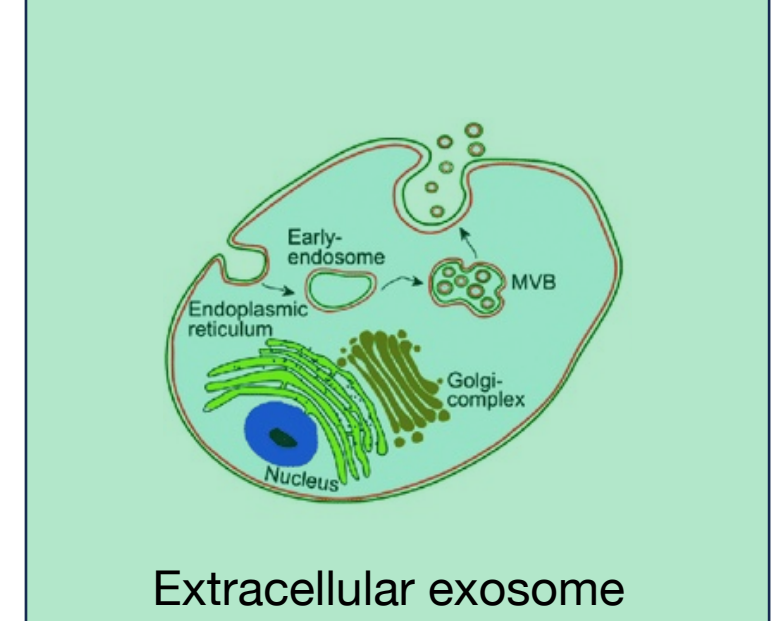
MOLECULAR FUNCTION



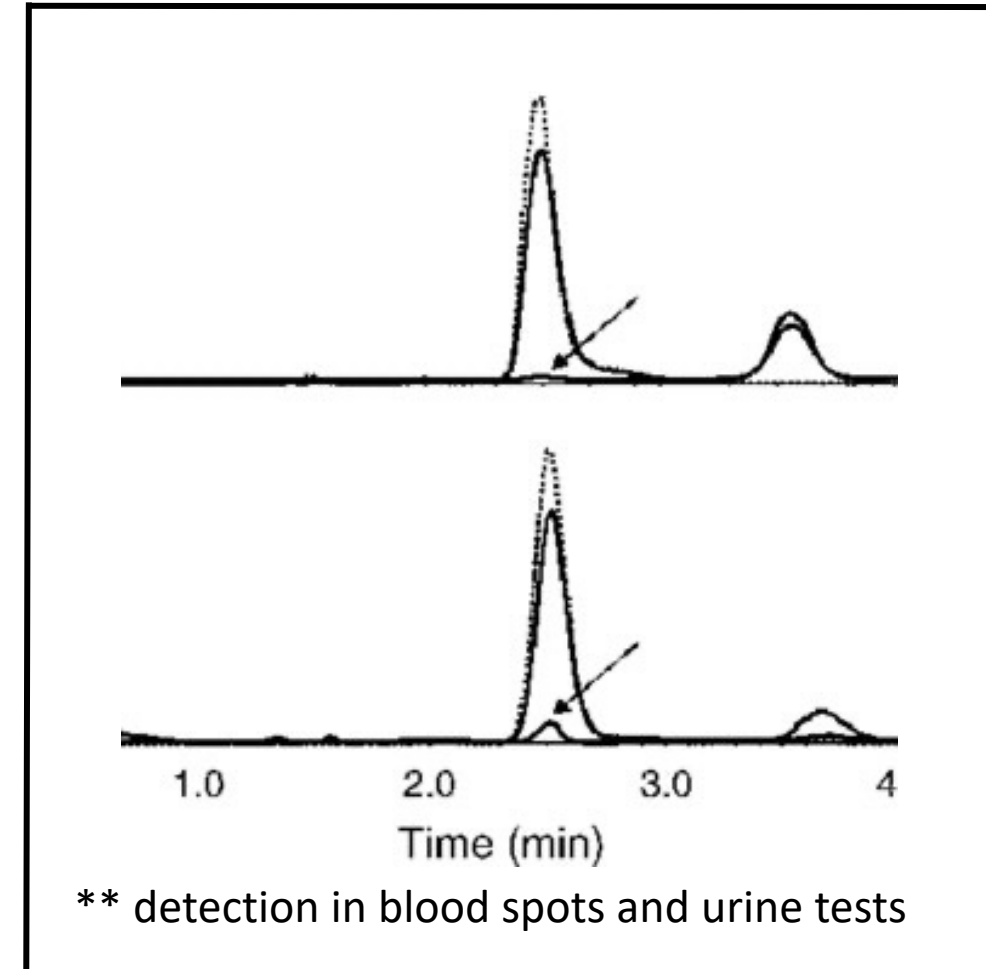
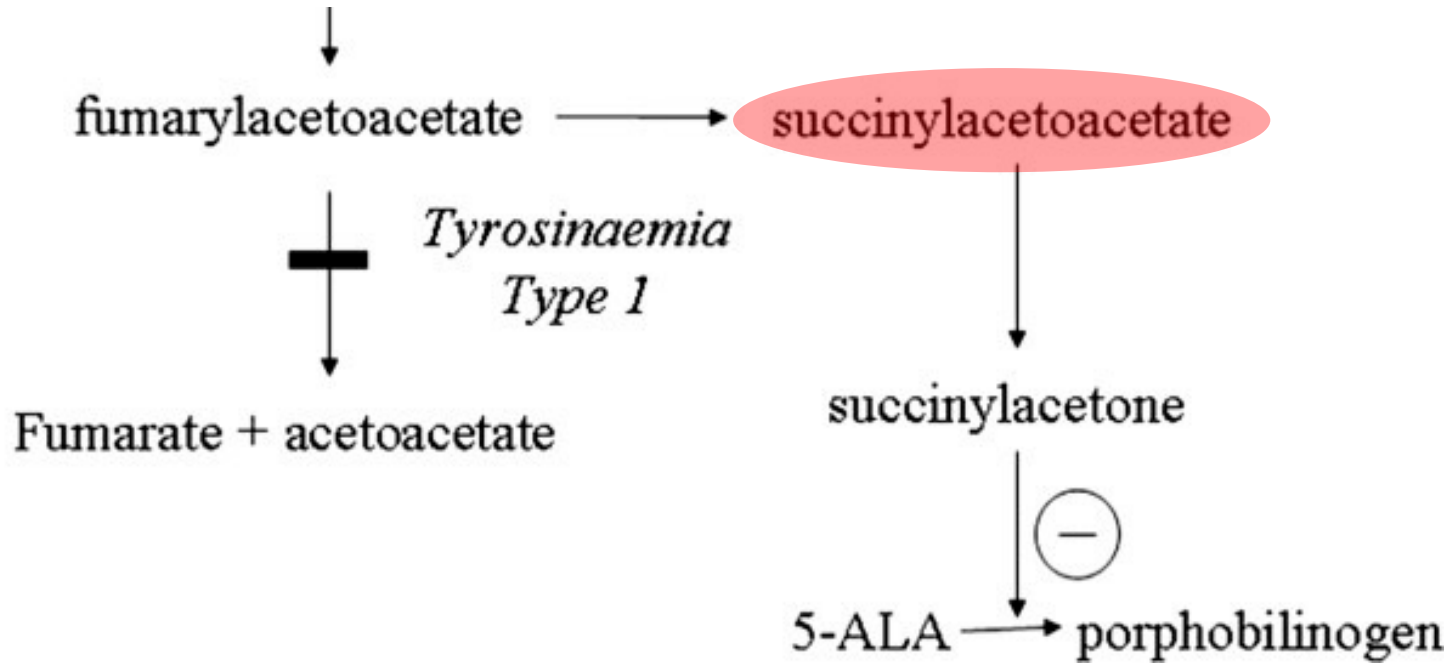
BIOLOGICAL PROCESS



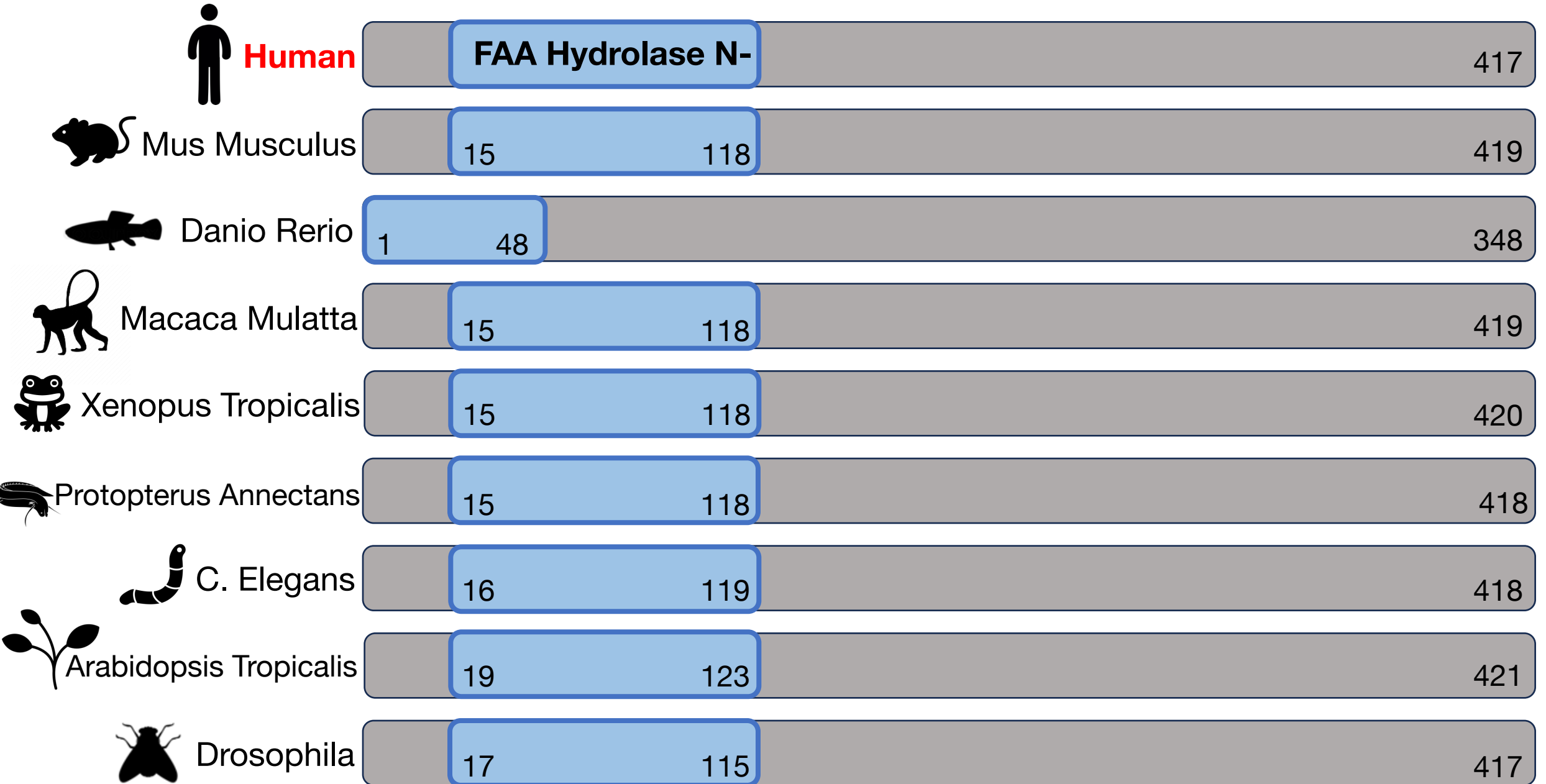
CELLULAR COMPONENT



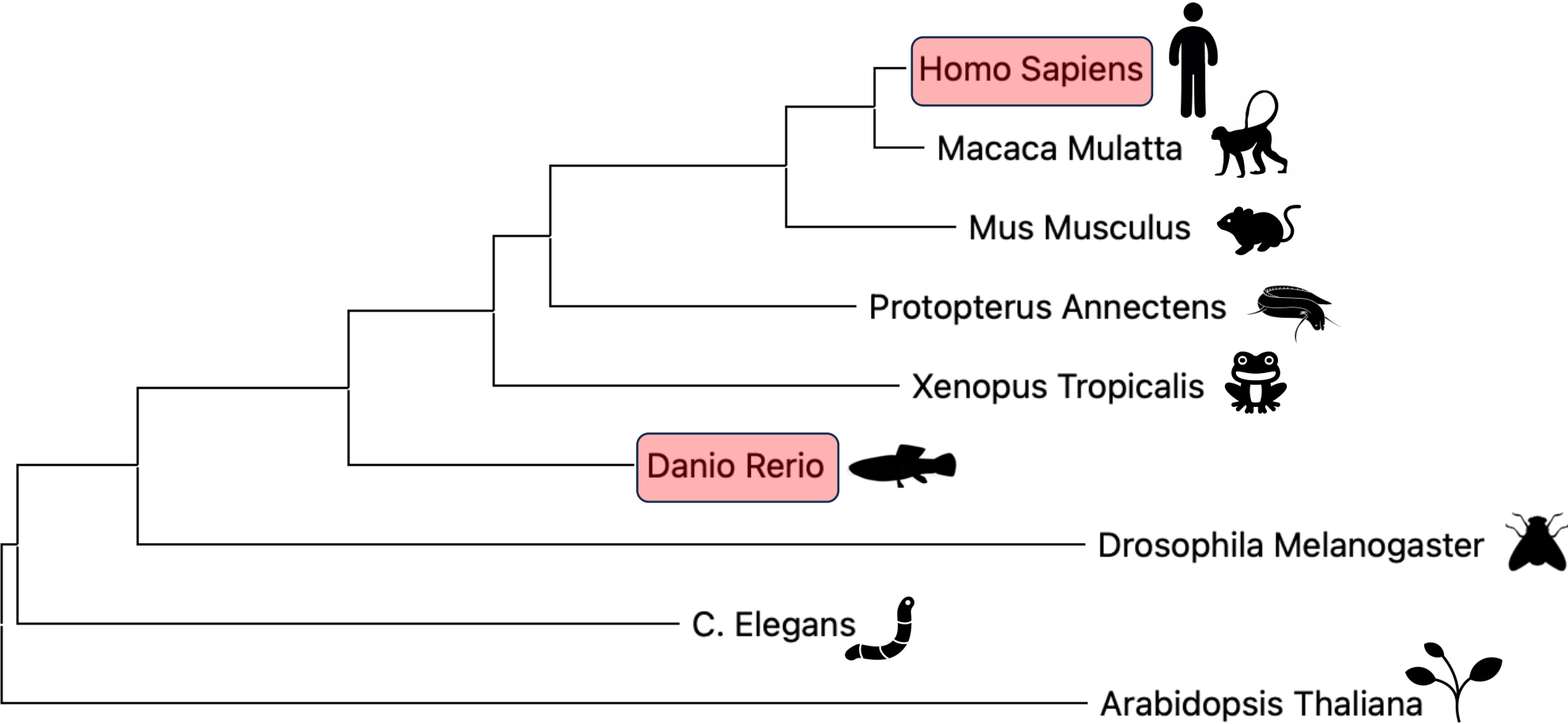
What happens when fumarylacetoacetase hydrolase is not present?



How well conserved is the FAA enzyme across organisms?



Phylogenetic Tree



0.10

References

<https://medicine.wustl.edu/news/study-reveals-links-between-fatty-liver-disease-liver-cancer/>

<https://www.sciencedirect.com/science/article/pii/S0166445X1730317X?via%3Dihub#fig0015>

<https://www.ncbi.nlm.nih.gov/pmc/articles/PMC3870180/>

<https://www.ncbi.nlm.nih.gov/pmc/articles/PMC4303001/>